

Elegant 181 sqm Duplex
in Voula
Garden Access
Independent Ground Level





Voula | Athens Riviera Lifestyle & Connectivity

Voula, at the heart of the Athens Riviera, is one of the most sought-after residential areas in southern Athens, combining a refined coastal lifestyle with excellent everyday infrastructure. The neighborhood offers easy access to high-quality beaches, premium dining and leisure venues, and a smooth connection to both Athens city center and the international airport. With international schools, modern services, and a strong sense of safety and privacy, Voula continues to attract consistent international demand—making it an ideal choice for both primary residence and long-term investment.



Voula | Athens Riviera

Lifestyle & Connectivity

Set in the prestigious area of Voula on the Athens Riviera, this elegant 181 sqm duplex residence offers refined coastal living just moments from the sea. Arranged over two levels, it features generous reception areas with a fireplace, a separate dining space, an independent kitchen, and a flexible bedroom layout, while the ground-floor level benefits from its own independent entrance—ideal for guests, staff accommodation, or a fully autonomous guest suite. Direct access to a garden, abundant natural light throughout the day, and quality finishes create a strong sense of comfort and privacy, making the property an excellent choice for both a primary home and a high-potential investment.





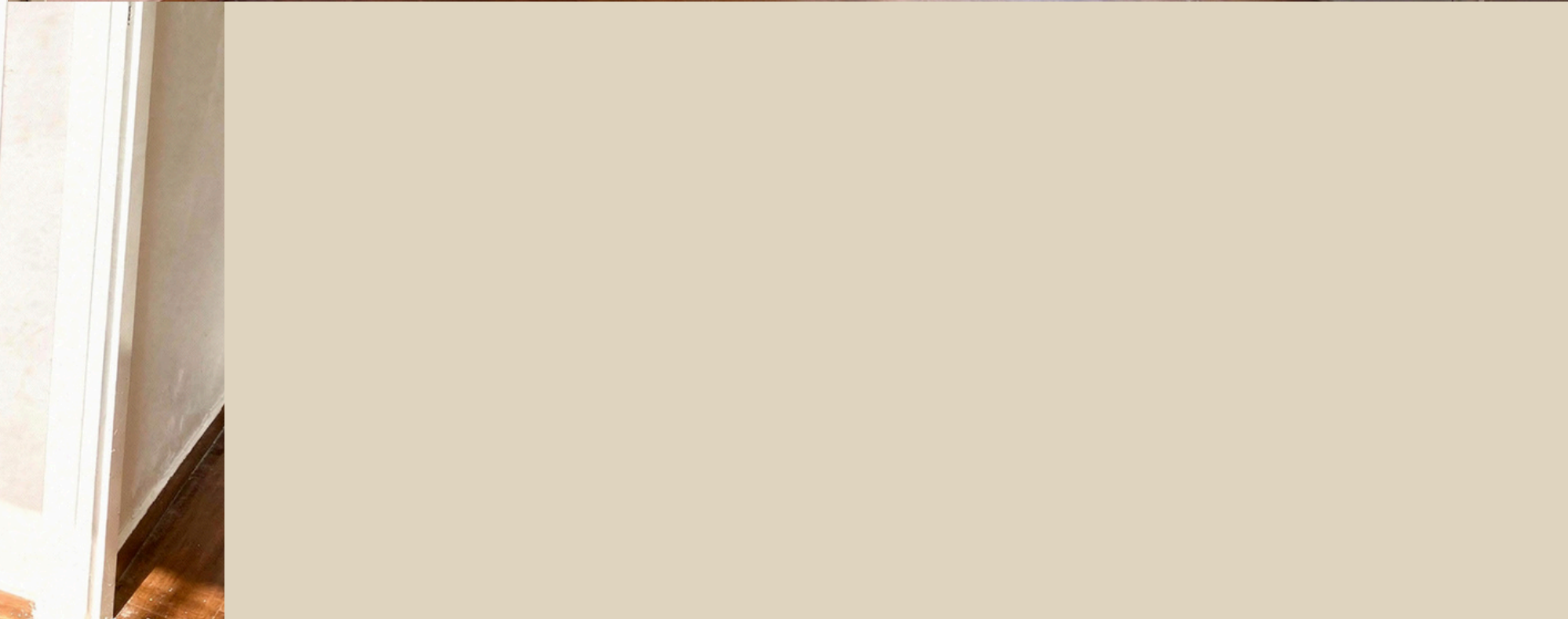
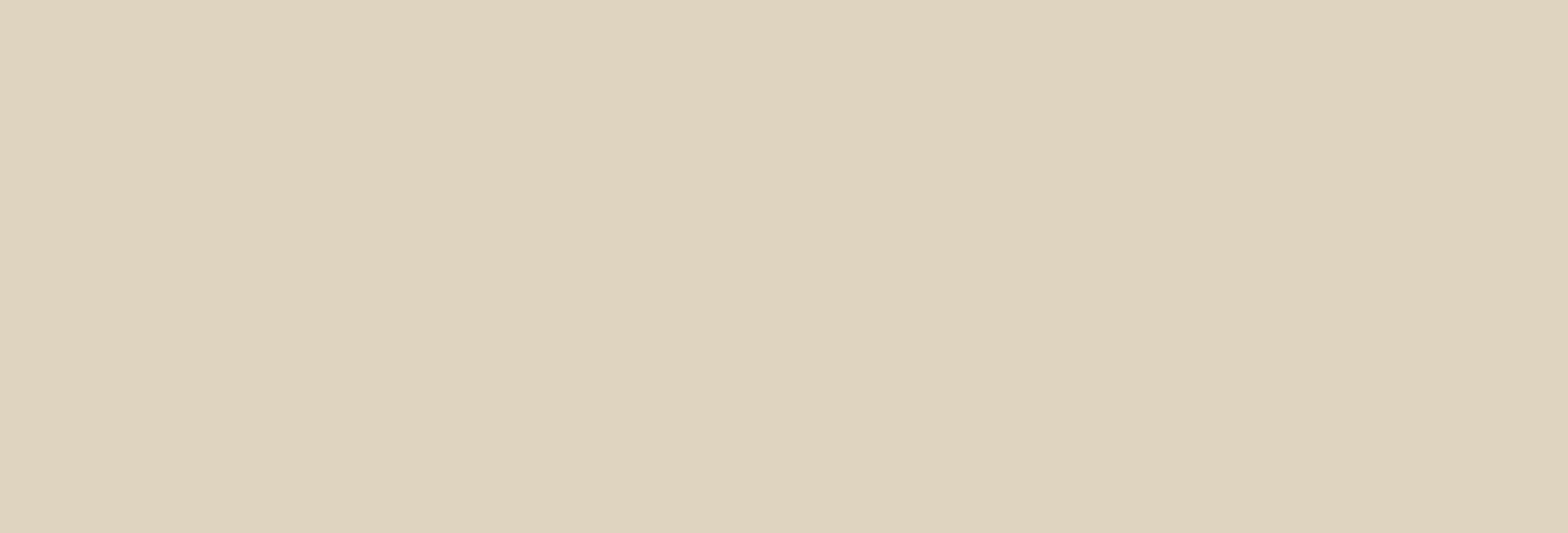




















253 Kifisias Ave., Kifisia, Attica 14561, Greece | +30 210 8017156 | .info@domitech.ltd

