





# THE PEBBLE HOUSE

TINOS, GREECE

**P**hed on a hillside with sweeping views of the Aegean, 'The Pebble House' comprises a three-bedroom villa with a guest suite, designed in harmony with the untamed landscape of Tinos.

Formed of contemporary exposed concrete and natural island stone, the villa quietly blends into its Cycladic surroundings; where low vegetation, scattered rocks, and dry stone walls define the terrain.

The architecture is composed of grounded, solid forms that open in specific directions to embrace the views while offering protection from the island's Mediterranean sun. Each room is uniquely positioned to frame the sea; sometimes in broad, panoramic vistas, other times through more private, focused glimpses.

Inside, the experience is one of gentle movement and sensory calm: light shifts across textured walls, breezes pass through shaded courtyards, and the sound of the wind brings a steady rhythm to the silence.

The Pebble House is a retreat shaped by the elements; stone warmed by sunlight, the wind flowing through carefully crafted spaces, and the sea's glow, softly lighting the interiors. More than just a place to stay, rooted in stillness and in tune with the picturesque island of Tinos.

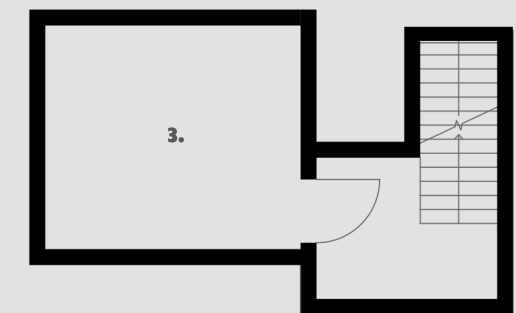
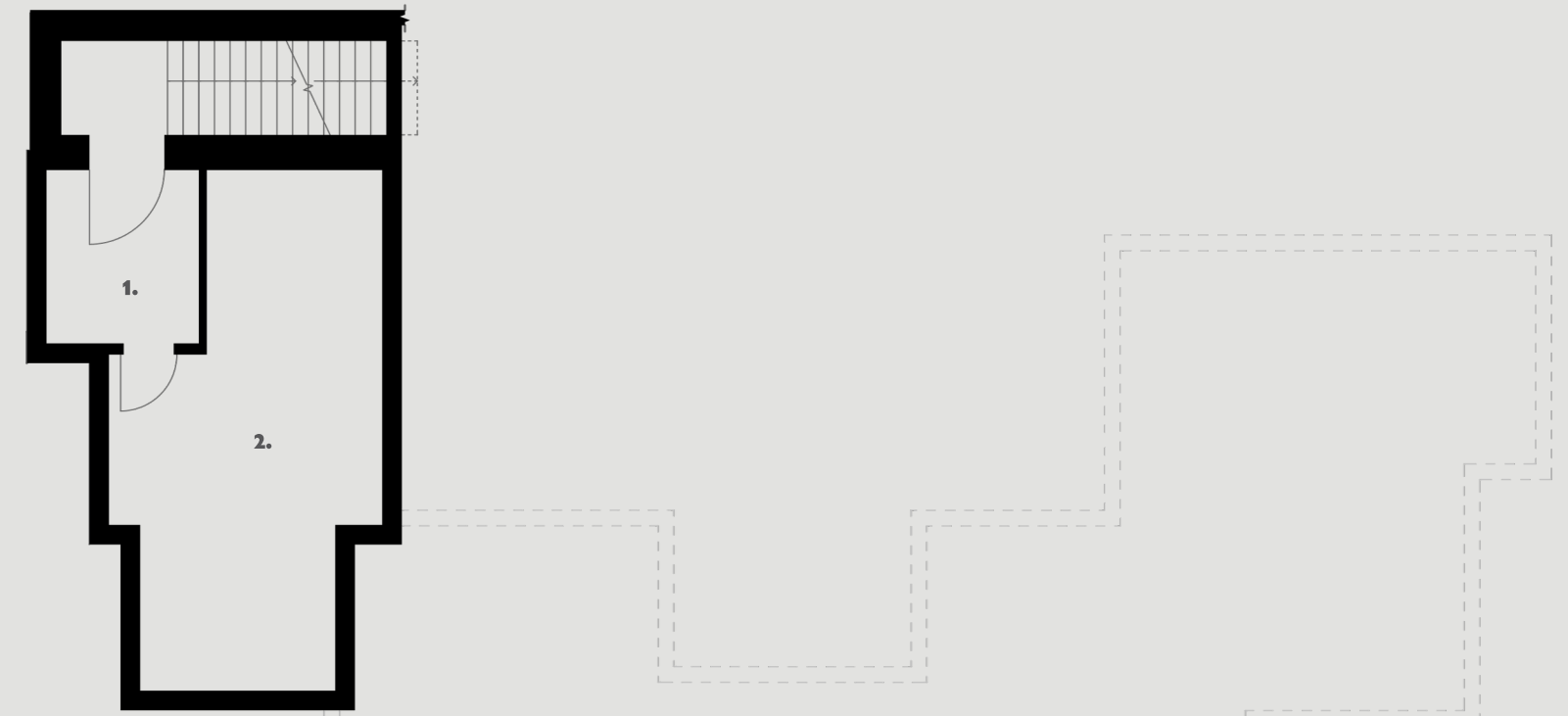


THE PEBBLE HOUSE  
**Ground Floor Level**

FLOOR PLAN

1. Guest House Access	-	11. 2nd Bedroom	18.08 m <sup>2</sup>
2. Courtyard	-	12. Ensuite	4.59 m <sup>2</sup>
3. Lobby	3.15 m <sup>2</sup>	13. Shared WC	2.19 m <sup>2</sup>
4. Lounge	19.81 m <sup>2</sup>	14. Storage	1.32 m <sup>2</sup>
5. Kitchen	18.42 m <sup>2</sup>	15. External Dining Area	-
6. Dining Room	8.10 m <sup>2</sup>	16. External Seating Area	-
7. Lobby	13.36 m <sup>2</sup>	17. Swimming Pool	50 m <sup>2</sup>
8. Primary Bedroom	17.38 m <sup>2</sup>	18. Terrace	-
9. Primary Walk-in Wardrobe	8.19 m <sup>2</sup>	19. Private Courtyard	-
10. Primary Ensuite	8.13 m <sup>2</sup>	20. Private Pool	4.18 m <sup>2</sup>

<b>B01 TOTAL</b>	<b>62.85 m<sup>2</sup></b>	<b>GF TOTAL</b>	<b>156.13 m<sup>2</sup></b>	<b>1st FL TOTAL</b>	<b>51.35 m<sup>2</sup></b>
------------------	----------------------------	-----------------	-----------------------------	---------------------	----------------------------



THE PEBBLE HOUSE

**First Floor Level**

FLOOR PLAN

1	Lobby	4.72 m <sup>2</sup>	6.	Balcony	-
.	3rd Bedroom	11.73 m <sup>2</sup>	7.	O3	-
2	Balcony O1	-	8.	Balcony	7.49 m <sup>2</sup>
.	Balcony O2	-	9.	O4 Guest	3.89 m <sup>2</sup>
3	Shared Bathroom	8.78 m <sup>2</sup>	1	House	-
.			0.	Ensuite Balcony O5	
4					
.					

**Basement Level**

FLOOR PLAN

1	Storage	6.74
.	Storage	m <sup>2</sup>
2	Plant Room	28.4
.		m <sup>2</sup>
3		14.0
.		m <sup>2</sup>





























FROM PORT TO  
PEBBLE HOUSE.



Διεύθυνση: 253 Kifisias Ave., Kifisia,  
Attica 14561, Greece

Τηλέφωνο: +30 210 8017156

Κινητό / WhatsApp: +30 698 5803774

[www.domitech.ltd](http://www.domitech.ltd)